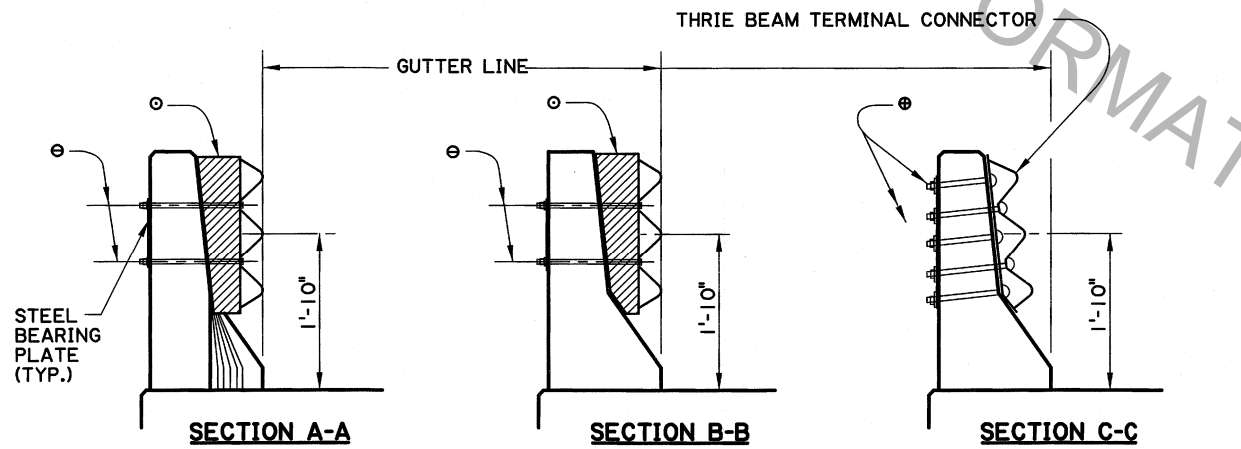


PLAN VIEW



SECTION A-A

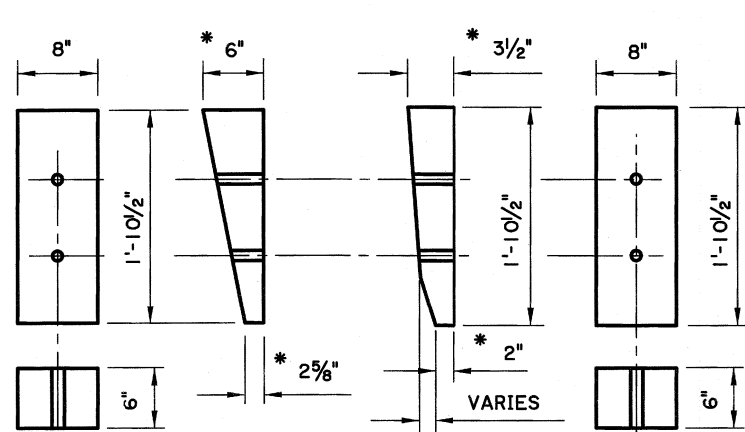
SECTION B-B

SECTION C-C

- ⊙ 5-7/8" ϕ H.S. ASTM A449 HEX THROUGH BOLTS WITH 5/8" BEARING PLATE (SEE STD. PLAN GR 200, SHEET 9 OF 10)
- ⊙ 2-5/8" ϕ BUTTON HEAD BOLTS WITH 5/8" BEARING PLATE, NUTS, & WASHERS
- ⊙ 6" x 8" x 1'-10 1/2" TREATED TIMBER BLOCK (CUT & SHAPE IN THE FIELD TO FIT).

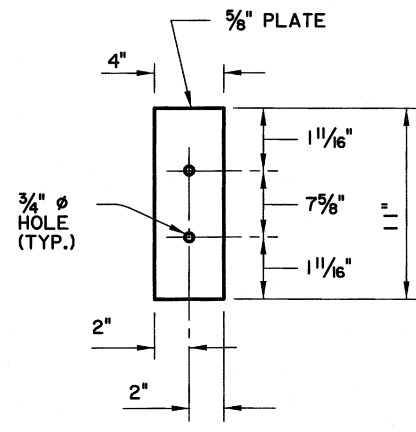
NOTES:

1. FOR ADDITIONAL INFORMATION ON GUARD RAIL TRANSITION, SEE STD. PLAN GR-200, SHEET 3 OF 10.
2. ALL HARDWARE AND TIMBER USED FOR CONNECTING THE SINGLE THRIE BEAM TO THE EXISTING BRIDGE RAIL SHALL BE PAID FOR UNDER ITEM 704-06-00200, GUARD RAIL BRIDGE ATTACHMENTS (SINGLE THRIE BEAM), PER LIN. FT.
3. ANY DAMAGE DONE TO THE EXISTING STRUCTURE DURING INSTALLATION OF THE GUARD RAIL SHALL BE REPAIRED AT THE CONTRACTORS EXPENSE AND TO THE SATISFACTION OF THE PROJECT ENGINEER.
4. GALV. STEEL OGGEE WASHER MAY BE USED IN LIEU OF THE STEEL BEARING PLATE.
5. ALL H.S. BOLTS SHALL BE ASTM A449. ALL 5/8" ϕ BOLTS SHALL BE ASTM A307.
6. A 25'-0" SECTION OF THRIE BEAM RAIL (WITH NO SPLICE) SHALL BE INSTALLED SYMMETRICALLY WITH RESPECT TO THE SECOND TIMBER BLOCK USED AT THE END OF THE STRUCTURE.
7. THE WOOD SHIM BLOCKS SHALL BE CUT & SHAPED IN THE FIELD TO FIT THE LOCATION WITH A SNUG FIT.
8. THE BOLT HOLES SHALL BE FIELD DRILLED THRU THE GUARD RAIL, SHIM BLOCKS AND THE BARRIER RAIL AT THE SAME TIME.
9. THE GUARD RAIL SHALL NOT PROTRUDE BEYOND THE GUTTER LINE.



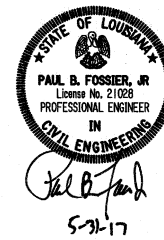
SHIM BLOCK FOR SECTION A-A

SHIM BLOCK FOR SECTION B-B



STEEL BEARING PLATE

* DIMENSIONS ARE ASSUMED. ADJUST IN THE FIELD AS REQUIRED. HOLES SHALL BE DRILLED IN THE FIELD. SEE NOTE NO. 8.



SHEET NUMBER	
DESIGNED	P. FOSSIER
CHECKED	K. BRAUNER
DETAILER	C. OWENS
REVIEWED	P. FOSSIER
SERIES #	C. GUIDRY
PARISH	
CONTROL SECTION	
STATE PROJECT	
DATE	4-8-16
NO.	
REVISION OR CHANGE ORDER DESCRIPTION	GUARDRAIL HEIGHT, ANCHOR BOLT NOTE AND BASE PLATE
BY	P. F.
NEW JERSEY BARRIER RAIL RETROFIT	
FOR STRUCTURES GREATER THAN 60 FEET	
BRIDGE AND STRUCTURAL DESIGN	